

WESTMORLAND COUNTY COUNCIL



INTEGRITY AND SERVICE

**THE LAKES**  
**SECONDARY SCHOOL**

EDUCATION COMMITTEE



WESTMORLAND COUNTY COUNCIL

EDUCATION COMMITTEE



THE LAKES SECONDARY SCHOOL

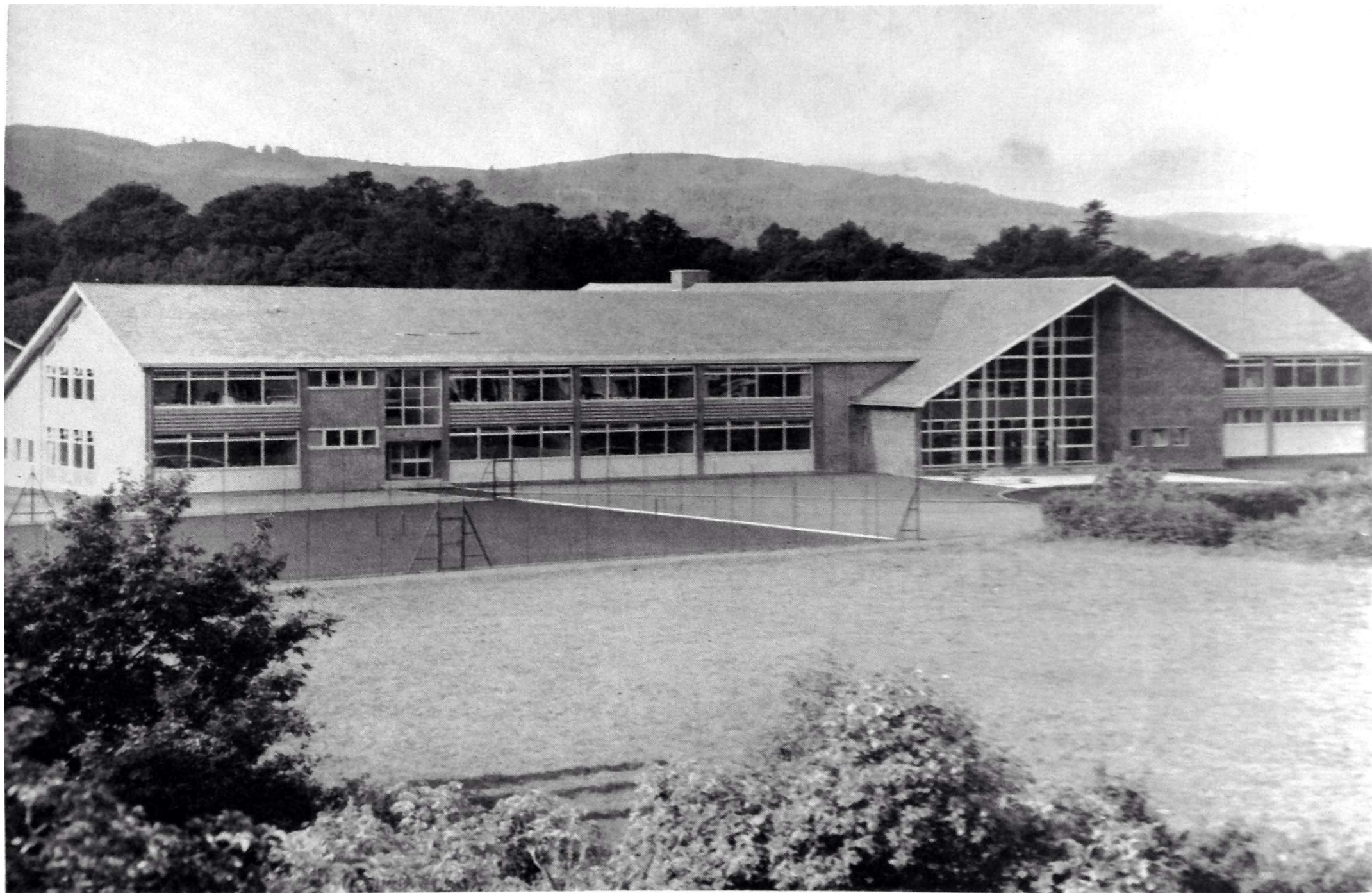
**OFFICIAL OPENING.**

by

The Right Honourable  
ANTHONY CROSLAND, M.P.

FRIDAY, 8th OCTOBER, 1965







## ORDER OF THE PROCEEDINGS

---

### PRAYERS

The Reverend Colin Elliot, M.A.,  
*Rector of Windermere and Chairman of the Governors*

### THE CHAIRMAN

R. S. Crossfield, Esq., J.P.  
*Chairman of the Westmorland County Council*

### THE SECRETARY OF STATE FOR EDUCATION AND SCIENCE

The Right Honourable Anthony Crosland, M.P.

### VOTE OF THANKS

Proposed by K. Dobell, Esq., J.P.  
*Chairman of the County Education Committee*

### THE NATIONAL ANTHEM

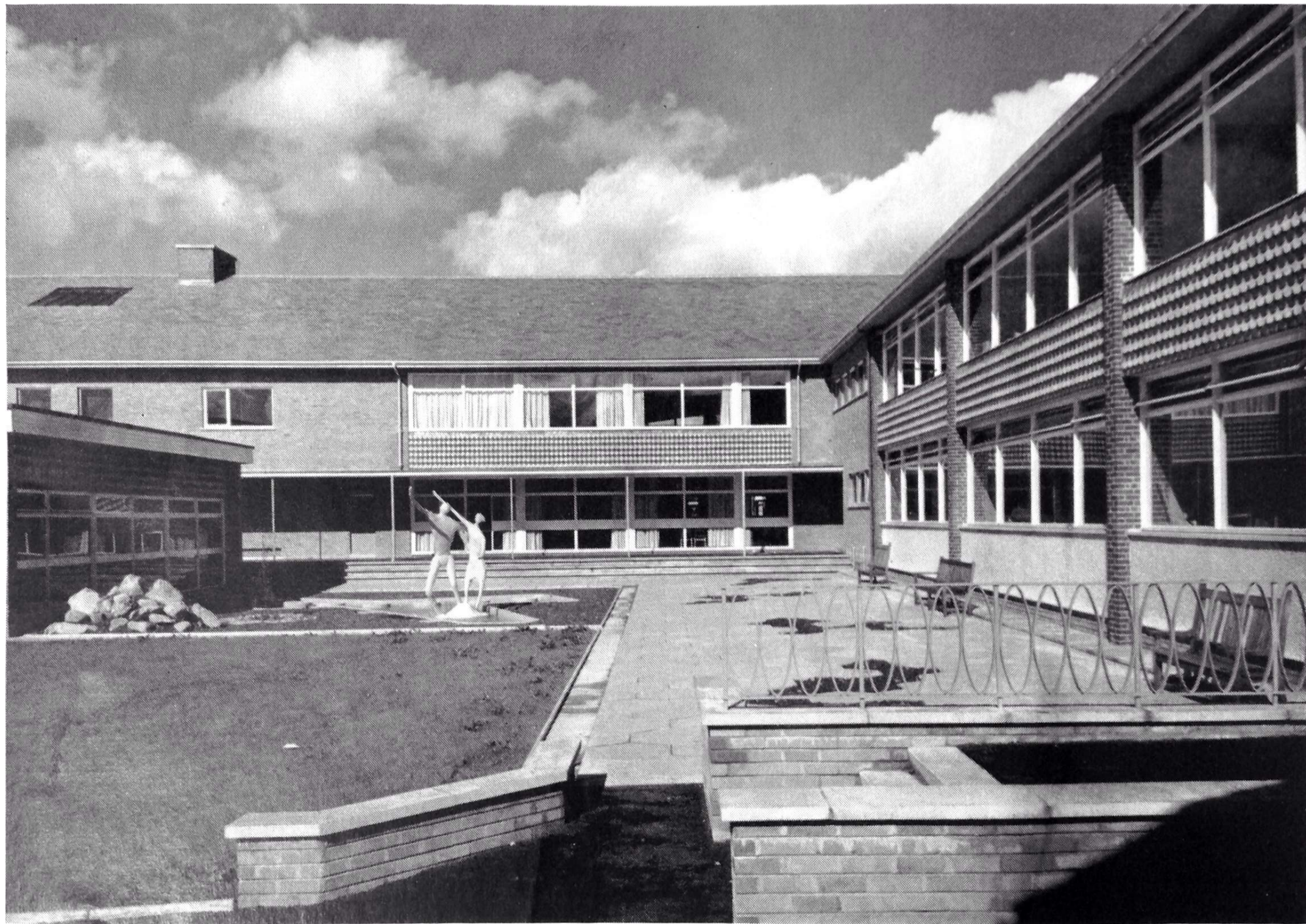
*Headmaster:*  
G. G. THOMAS, M.A.

*Clerk of the County Council:*  
K. S. HIMSWORTH, M.A., LL.B.

*County Architect:*  
W. R. WARK, A.R.I.B.A., A.R.I.A.S.

*Director of Education:*  
E. L. CLARKE, M.A.



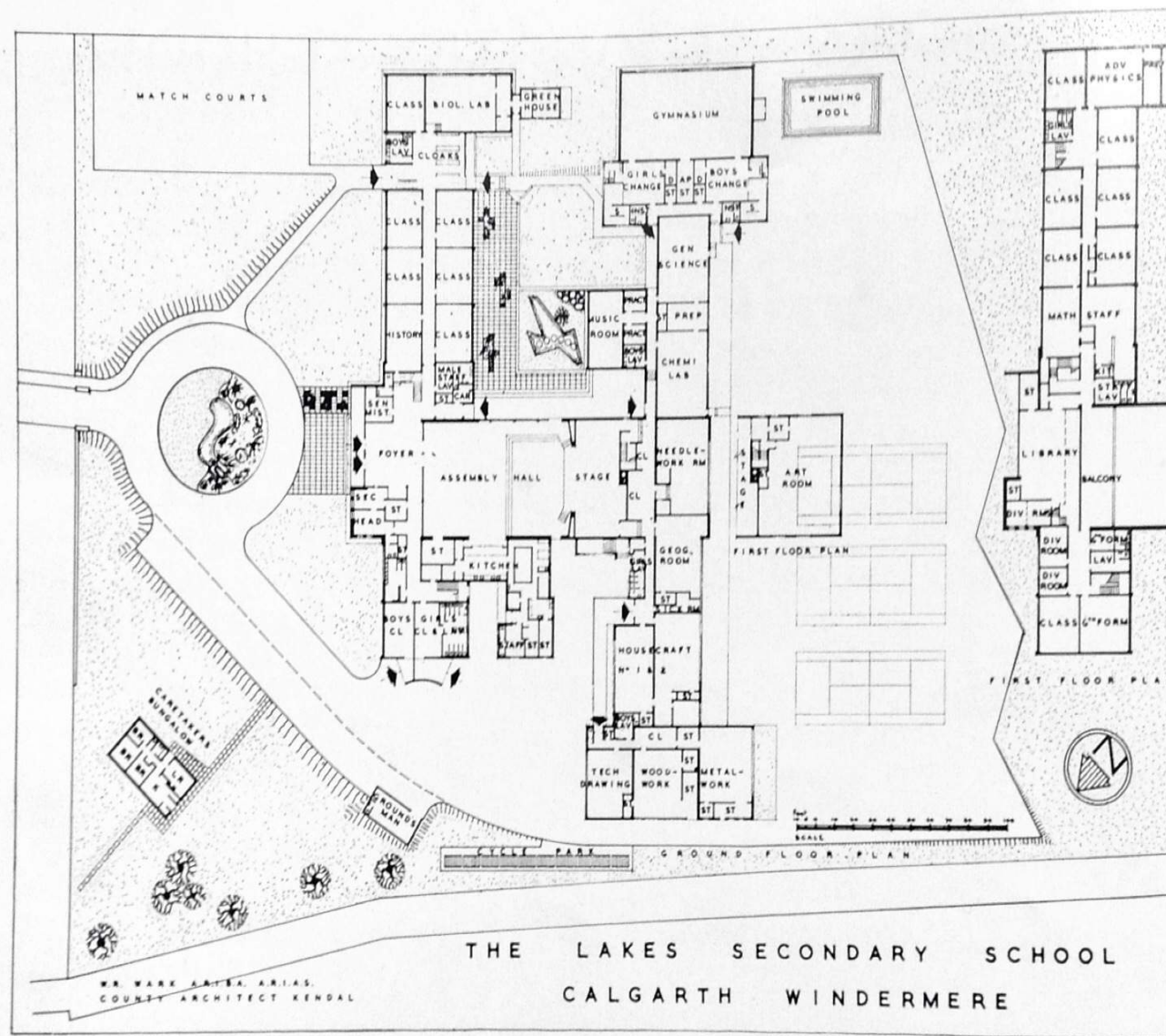




## THE LAKES SECONDARY SCHOOL

THE school lies on the south-west side of the main Windermere-Ambleside road A591, and the actual site on which the new buildings stand was, during the early part of the Second World War, used to provide housing and school facilities for the people employed in the shadow factory producing Sunderland flying boats. Final clearing of the site was not accomplished, however, without serious difficulties and prolonged negotiations, and often it was doubtful whether it would not be better to look for another site, if the school was ever to be built. Nevertheless, these were completed and the final demolition took place two and a half years ago, with the exception of the war-time school, which will be retained and used for some little time. Ultimately it will be pulled down to complete the layout of the Playing Fields. All the hard materials arising out of the clearance of the temporary dwellings have been used as the foundation for the new approach road to the school. Particular care has been exercised to ensure that the approach and drive to the school, with its immediate surroundings, are both dignified and pleasing. This has been achieved by omitting boundary fences and in the relationship between the soft curves and differing levels, combined with the planting of trees and ornamental flower beds which ultimately should reflect the natural characteristics of the National Park.

The new Lakes Secondary School provides in one building a complete reorganisation of secondary education in the Westmorland Lake District, from Grasmere in the north to Winster in the south, and from Langdale in the west to Staveley in the east. The conception of this school dates back to the Local Authority's Development Plan of 1948, in which it was proposed to provide secondary education in this district in one comprehensive school. Although the plan was approved by the then Ministry of Education, it did not become possible to consider building until 1960. At that date, although the Development Plan proposals still stood as a declaration of intention, a firm decision had to be made to build a new school and close three existing schools when this was done. The three schools existing were Kelsick Grammar School at Ambleside, which was a mixed single-stream Grammar School with a preponderance of girls; Windermere Grammar School, a very small school for boys, which had been turned into a Boys' Comprehensive





School in 1946, and the Old College at Windermere, which was a temporary modern school for girls, opened in 1950. Although the Old College was known to be temporary and intended only to last until the new school was built, the other two schools were Grammar Schools of ancient foundation and were not closed without considerable regret and some misgiving. Nevertheless, since the decision was taken in 1960 the old controversies have been laid aside, and the new school opens with a great fund of loyalty and goodwill and high hopes for the future.

This school, which can accommodate some 600 pupils, must supply all the needs and offer all the opportunities which were available at the three previous schools. In fact it must do more, since it will not have fulfilled its purpose as a comprehensive school if it does not offer opportunities in all branches of education, some of which were not even attempted by any of its predecessors. This is shown in the provision for varied activities made in the building. For example, the school has a fully equipped Metalwork Room as well as a Woodwork Room, and attached to these is a Technical Drawing Room. Particular emphasis has been given to the Domestic Science activities for girls, and the two cookery rooms are fitted out with all the latest types of equipment available, and in addition a specially equipped Needlework Room has been provided. There is a very large Art Room capable of accommodating two separate classes at once, and which not only caters for the more conventional types of drawing and painting but also has facilities for the heavier crafts such as pottery. Easy access has been provided from the Art Room to the Stage so that the sets for school plays can be prepared and passed direct to the stage. The Laboratories for General Science, Chemistry, Biology and Advanced Physics are all completely fitted out and some are capable of being blacked out for either projector work or more advanced light experiments. In view of the fact that there is a Commercial Course in Kendal which is within easy reach, it was considered unnecessary to duplicate this subject.

On the educational side of school planning the Westmorland Authority has aimed at the incorporation of modern ideas and developments so long as these do not run counter to what are considered the basic requirements of a school building, that is to say, privacy for the teaching process, reasonable noise insulation, and an attention to detail which is of the greatest importance to the comfort of the teachers and pupils working in the school. In the case of this school, the most noticeable new development will probably be the Sixth Form Room, which is designed for young adults rather















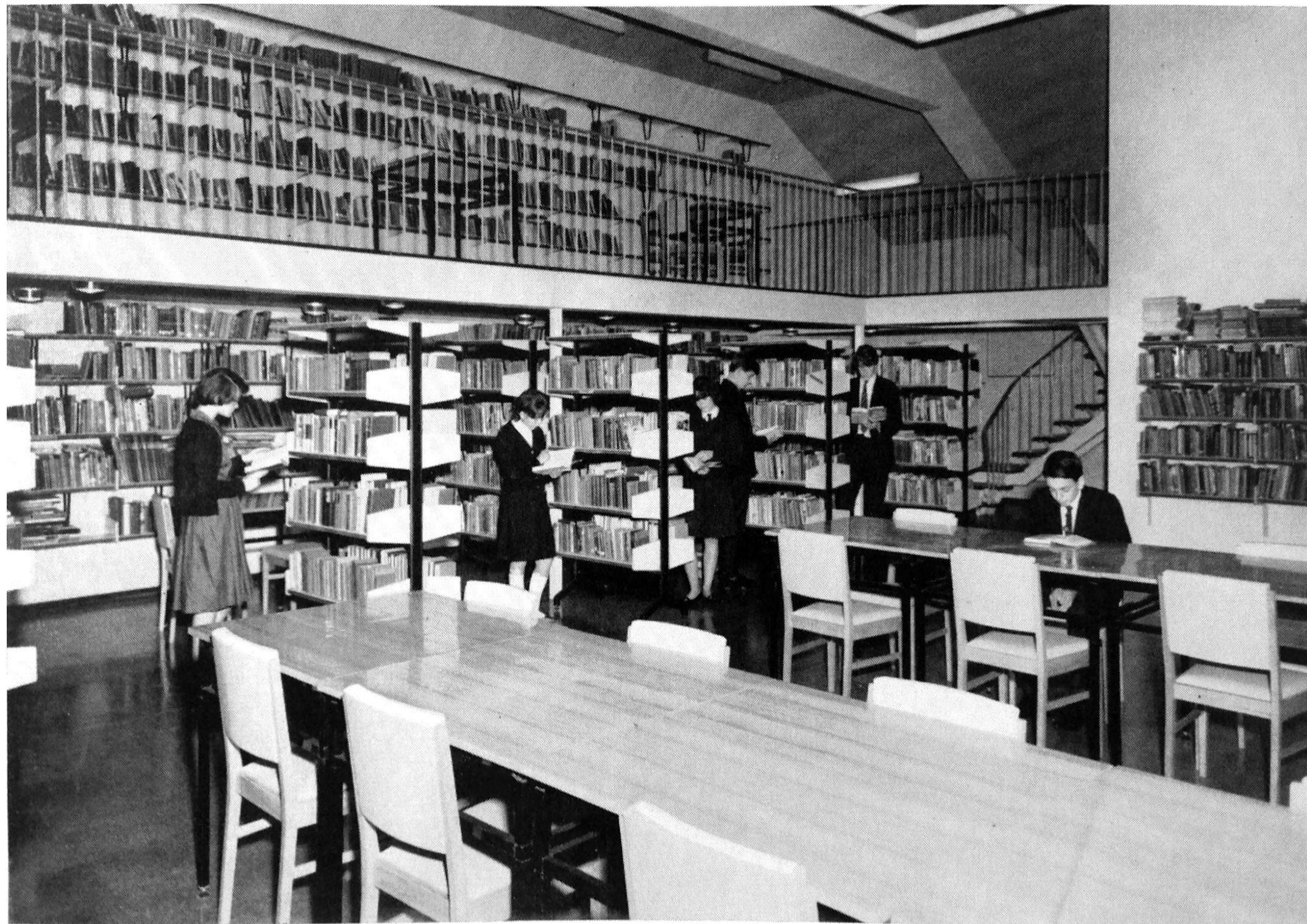
than for schoolboys and girls, and this, together with the small Division Rooms, has been placed near the Library to form a self-contained section in which a good deal of the Sixth Form reading and teaching will go on.

The main school buildings are planned in the shape of a letter "I" and comprise three main units. The top of the letter represents the main elevation as seen from the main road, and consisting on the ground floor of an Entrance Foyer flanked by classrooms terminating in a Biology Laboratory on one side and on the other side Administration and Cloaks. The first floor has the Library over the Foyer with classrooms and Advanced Physics on the one side and Sixth Form and Division Rooms on the other. The main body of the letter "I" is taken up with the Assembly Hall and Stage, under the latter being the Boiler House, with the Kitchen placed to one side. The Assembly Hall has been designed not only for assembly and dining, but to provide a very high standard of amenity for the production of school drama and to give first-class facilities if required by outside organisations interested in furthering the arts in the County. The foot of the letter "I" may be termed the practical block. On one side there are the General Science and Chemistry Laboratories, a detached Music Room terminating in the Gymnasium and Changing Rooms, and on the other side Needlework, Geography and two Housecraft Rooms, terminating in a unit containing Woodwork, Metalwork and Technical Drawing. The hard playing surface is in the form of one communal area to the south-west of the school and at one end a heated open-air swimming pool has been provided by the Parent Teachers' Association. Between the classrooms and practical wing a quadrangle has been formed with ornamental pool and terrace where groups may gather away from the noisy playground for informal discussion or relaxation.

Every effort has been made to ensure that the new buildings will harmonise with the existing local character, and the materials used, together with the large areas of green slate roofs, will ensure perfect blending with the natural surroundings.

Internally, the Ground Floor corridors have been laid in mastic asphalt which is easy to keep clean, whilst on the First Floor rubber has been used for quietness. The remaining floors are generally hardwood, which, whilst being easy to keep clean, give a hardwearing surface of pleasant appearance.







The Foyer has a decorative vinyl floor, and the Library floor, immediately above, is of cork to ensure the minimum of noise disturbance. For the most part the ceilings are of fibre boarding to provide a measure of heat insulation and acoustic correction. Heating is provided by a low pressure hot water system. Twin oil-fired boilers are installed to serve both the normal type radiators and warm air convection cabinets. The Domestic Hot Water for the school and kitchen is provided by means of a smaller oil-fired boiler.

The total cost of the school premises, including site works and Playing Fields, etc., will be in the region of £267,700, and the cost of furnishing and equipping the school approximately £20,000.

The General Contractors were Messrs. Thomas Armstrong (Contractors) Ltd., of Cockermouth, and the Quantity Surveyors Messrs. Eric Thornely & Partners, of Liverpool.

The Architect for the school was the County Architect, under whose direction the school was designed and erected.

The team of architects responsible were:

W. R. Wark, A.R.I.B.A.

L. A. Brown, A.R.I.B.A.

R. Gardner, A.R.I.B.A.

C. W. Dunnington, A.R.I.B.A.

J. Makepeace

*County Architect*

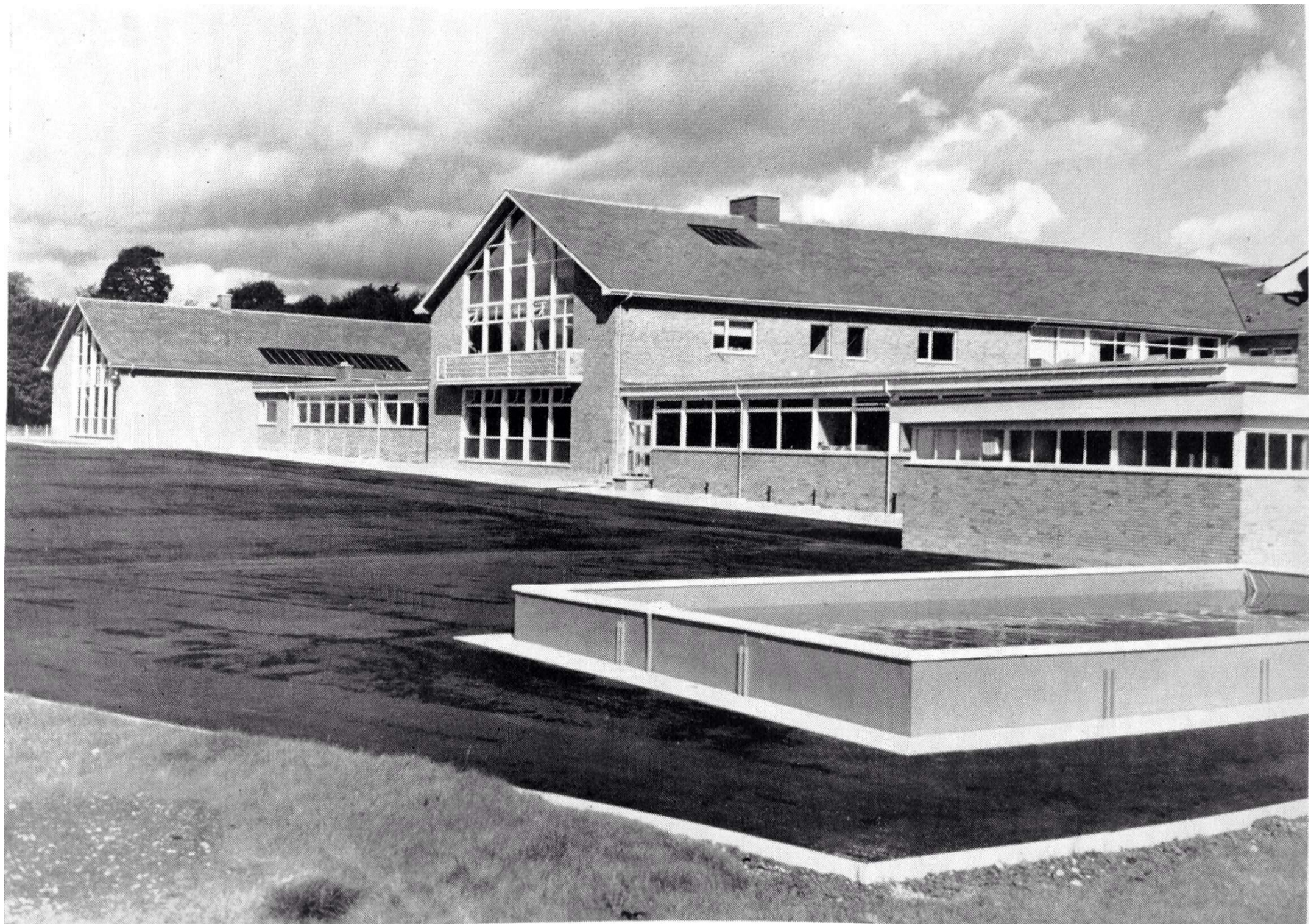
*Deputy County Architect*

*Architect-in-Charge*

*Senior Assistant Architect.*

*Clerk of Works*







## List of Contractors and Suppliers

### GENERAL

**CONTRACTOR** . Thos. Armstrong Ltd., Cockermouth.

### SUB-CONTRACTORS

Steelwork . . . Thos. Blackburn & Sons Ltd., Preston.  
 Precast Concrete Floors . Concrete Ltd., Leeds.  
 Steel Reinforcement . McCall & Co. (Sheffield) Ltd., Sheffield.  
 Windows . . . Monk Metal Windows (1961) Ltd., Birmingham.  
 Heating and Hot Water . Brightside Heating and Engineering Co. Newcastle.  
 Electrical Installation . Hadwins, Ltd., Kendal.  
 Electrical Services . North Western Electricity Board.  
 Gas Installation and Services . North Western Gas Board.  
 Woodblock and strip flooring . . . J. A. Hewetson and Co. Ltd., Hull.  
 Roller Shutter . . . G. Brady & Co. Ltd., Manchester.  
 W.I. Balustrading . . . George Wragge Ltd., Salford.  
 Stage Lighting and Assembly Hall Curtains The Rank Organisation, London.  
 Suspended Ceilings . Thos. Armstrong Ltd., Cockermouth.  
 Laboratory Furniture . The North of England School Furnishing Co. Ltd., Darlington.  
 Floor Coverings . . . The Limmer and Trinidad Lake Asphalte Co. Ltd., Manchester.

### SUPPLIERS

Timber Beams and Window Frames . . . L. R. Bootle and Norman Ltd., Coventry.  
 Felt Roofing . . . William Briggs and Sons Ltd., Liverpool.  
 Slate Roofing . . . Broughton Moor Green Slate Quarries.

Kitchen Equipment . . Black & White (Accrington) Ltd., Accrington.  
 Smith and Wellstood Ltd., Bonnybridge, Scotland.  
 Oliver Toms Catering Equipment Ltd., London.  
 Radiation Catering Equipment Ltd., Warrington.  
 The Hobart Manufacturing Co. Ltd., Manchester.  
 Imperial Machine Co. Ltd., Rickmansworth, Herts.  
 Contemporary Metalwork Ltd., Glasgow.  
 Refrigeration (Mitton) Ltd., Carlisle.

Kitchen Canopies . . Amdega Ltd., Darlington.  
 Ironmongery . . . Parker, Winder and Achurch, Ltd., Birmingham.

Rayburn Cooker and Fireplaces . . . A.P.'s (Kendal) Ltd., Kendal.

Lockers . . . A. J. Binns Ltd., London.

Precast Concrete Treads and Risers . . . Wettern Bros. (Manchester) Ltd., Manchester.  
 The Horncop Concrete Works Ltd., Kendal.

Landscaping and Gardens T. R. Hayes and Sons, Ambleside.

Fire Fighting Equipment . The Dunford Fire Protection Services Ltd., Newcastle.  
 George Angus and Co. Ltd., Newcastle.  
 Minimax Ltd., Middlesex.

Flush Doors . . . F. Hill and Sons Ltd., Stockton-on-Tees.

Assembly Hall Speakers and Record Playing Equipment . . . Clarke and Smith Manufacturing Co. Ltd., Wallington.

Gymnasium Equipment . Neils Larson and Sons, Ltd., Leeds.

Library Furniture . . . Terrapin Reska Ltd., London.

Black Boards . . . Wilson and Garden Ltd., Kilsyth.  
 Westland Engineers Ltd., Yeovil.

Bricks . . . Blockleys Ltd., Wellington, Salop.  
 Penningtons (Kendal) Ltd., Kendal.

Incinerators . . . Wandsworth Electrical Man. Co. Ltd., Woking.



Blackout and Blinds . Wat Simmons, Nottingham.  
Musgroves (Kendal) Ltd., Kendal.  
Paint . . . British Paints Ltd., Newcastle.  
Soft Furnishings . Musgroves (Kendal) Ltd., Kendal.

#### MACHINERY

Sawbench . . . C. W. Tyzack Ltd., London.  
Lathes . . . T. S. Harrison and Sons, Ltd., Heckmondwike.  
Grindstone . . . S. Tyzack and Son Ltd., London.  
Bandsaw . . . Burgess Products Ltd., Sapcote.  
Planing Machine . . Wadkins Ltd., Leicester.  
Forge . . . Denford Small Tools, Ltd., Brighouse.  
Brazing Hearth . . Utile Engineering Co. Ltd., Irthlingborough.  
Lathes . . . Raglan Engineering Co. Ltd., Nottingham.  
Polishing Unit . . Charles Cooper (Hatton Garden) Ltd., London.  
Power Hacksaw . . W. Kennedy Ltd., West Drayton.

#### FURNITURE

Chairs, Tables, Desks, and  
Cookery Tables and  
Benches . . . E.S.A. Kingfisher Ltd., Stevenage.  
Bookcases . . . James Bass and Son Ltd., Darlestone.  
Needlework Tables . Wake and Dean Ltd., Bath.  
Work Tables . . Wilkinson (Bradford) Ltd., Pontefract.

Stools . . . H. C. Shepherd and Co. Ltd., Walton-on-Thames.  
Woodwork and  
Metalwork Benches . Emmerich (Berlon) Ltd., London.  
Sewing Tables . . Viking-Husqvarna Sewing Machine Co. Ltd.,  
London.  
Store Cupboards . . Morleys Ltd., London.  
Art Donkeys . . Mann Egerton Ltd., Norwich.  
Sewing Machines . . Singer Sewing Machine Co. Ltd., Kendal.  
Chairs and Tables . . Gordon Russell Ltd., Broadway.  
Card Index Cabinets . Evertaut Ltd., Darwen.

SPORTS EQUIPMENT. Neils Larson and Son Ltd., Garforth, Leeds.  
C. G. Davis & Son Ltd., Coventry.  
Kendal Sports Shop, Kendal.

#### ART EQUIPMENT

Kiln . . . Fulham Pottery Co. Ltd., London.  
Potters Wheel . . Dryad, Leicester.

#### OTHER EQUIPMENT

Radiogramophone . . Aspinall Radio Service, Windermere.  
Small Woodwork and  
Metalwork Tools . . Bailie and Hargreaves, Kendal.  
Gangmowers . . M. Croft and Son, Kendal.  
Tractor . . . F. H. Burgess (Kendal) Ltd., Kendal.