



---

SIXTH FORM

# 16+

# Options

## Information & Guidance



# Introduction

In The Lakes School Sixth Form we are ambitious for our students and committed to enabling you to achieve your goals and aspirations. The high expectations we have, together with the strong relationships that are unique to The Lakes School, creates an environment in which you are encouraged to aim high and fulfil your ambitions.

Year after year, the high-quality teaching and support provided by our team of tutors inspire students to make outstanding progress on their courses, and the vast majority of our students choose higher education to further their career aspirations. Of these, most students successfully apply to Russell group and first choice universities.

Underpinning this success is a relevant and diverse curriculum – because if you enjoy your subjects and engage with your learning, then of course you are going to thrive on them too! So choosing the right course for your unique talents is crucial. Please read this booklet carefully and if you have any questions about sixth form life and study then please do come and talk to us about them.

We believe our Sixth Form blends just the right balance of the supportive nature of a school, whilst promoting and fostering independence and responsibility.

**-The Sixth Form Team**

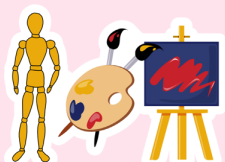


# Subject Choices

Within The Lakes School Sixth Form, selecting the right subjects is about crafting your unique academic path. We offer a diverse range of subjects, each a gateway to your future. Whether diving into sciences, humanities, technology, or the arts, our subjects foster critical thinking and deep understanding.

The right subjects aren't just about academic success; they're a catalyst for personal growth. They empower you to excel and equip you with skills vital for your journey beyond the classroom. Your choices here lay the foundation for a successful, fulfilling future.

You will also have the opportunity to undertake the EPQ (Extended Project Qualification) which empowers students to independently research, explore, and present a project on a topic of your choice, honing critical thinking and research skills for future academic and professional pursuits.



Art



Biology



Business Studies



Chemistry



Computer Science



Design &  
Technology



Drama



English Literature



Film Studies



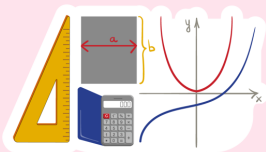
Further Maths



Geography



History



Maths



Music



Physical Education



Physics

# Sixth Form Entry

Subject	Entry Requirements	Head of Subject
Biology GCE	7+ in Biology and 6+ in Maths	Dr P Rigby
Chemistry GCE	7+ in Chemistry and 7+ in Maths	Dr P Rigby
English Literature GCE	6+ in English Language/Literature	Mr J Barr
Further Maths GCE	7+ in Maths / Recommendation	Ms V Harris
Geography GCE	6+ in Geography	Mr K Pickering
History GCE	6+ in History	Mr K Pickering
Maths GCE	7+ in Maths	Ms V Harris
Physics GCE	7+ in Physics & 6+ Maths	Dr P Rigby
Art & Design GCE	6+ in Art	Mr R Hardy
Computer Science	5+ in Computer Science	Dr P Rigby
Design & Technology GCE	5+ in DT	Mr Sharp
Drama & Theatre Studies GCE	5+ in Drama	Mr R Cartwright
Film Studies GCE	5+ in English	Mr J Barr
Music GCE	5+ in Music or Instrument Grade 5	Mr A Clarke
Physical Education GCE	5+ in the GCSE PE	Ms A Jeffrey
Business Studies L3	5+ in Business, English & Maths	Ms R Nelson
Additional Business Studies L3	5+ in Business, English & Maths	Ms R Nelson

## Making Options

You will need to choose 3 or 4 subjects. Students must also be sure they have reserve subject choices.

### What are GCE 1 subjects?

These are facilitating A Levels. Student who have aspirations of going to Russell Group universities are recommended to follow these A Levels.

### What are GCE 2 subjects?

These are A Levels that are recognised by all universities

### What are Level 3 subjects?

These are equivalent to A Levels and are recognised by most universities.

**Please note:** The model above may be subject to change.

Depending upon the demand for subjects, some subjects may not run. When thinking about your Sixth Form options, it is worth having 'reserve' subjects in mind.

# How subject choice can affect future career options

## Graduate Occupations

In the 1960s, 70s and 80s graduates represented only a very small percentage of the school-leaving population: 8%. Now it is more than 40%. Being a graduate no longer makes you part of a small elite and taking advanced level qualifications is now very common. You now need to think about what sort of graduate you may become. There are now five major types of graduate occupation:

### Traditional graduate occupations

There are established professions for which, historically, the normal entry route has been via an undergraduate degree programme. Examples are Barristers, Doctors, Engineers, Higher Education and Secondary Education Teachers and Research Scientists.

### Modern graduate occupations

The newer professions, particularly in management, IT and creative vocational careers, are areas which graduates have been entering since educational expansion in the 1960s. Examples are Accountants, Computer Programmers, Primary School Teachers and Journalists.

### New graduate occupations

There are areas of employment, many in new or expanding occupations, where the route into the professional area has recently changed such that it is now via an undergraduate degree programme. Examples are Marketing Managers, Physiotherapists and Computer Games Designers.

### Niche graduate occupations

There are established professions for which, historically, the normal entry route has been via an undergraduate degree programme. Examples are Barristers, Doctors, Engineers, Higher Education and Secondary Education Teachers and Research Scientists.

### Non-graduate occupations

All jobs that do not fall into the previous four categories are considered 'non-graduate occupations'. This does not automatically imply that it is not appropriate for a graduate to be doing them, or that a graduate cannot enjoy a fulfilling job. It means that, in the main, a degree is not required to enter these occupations.

# Know what you wish to study?

## Check out the entry requirements

If you have a university course that you are keen on, have you checked the relevant university website or UCAS course search ([www.ucas.ac.uk](http://www.ucas.ac.uk)) to find out whether this course requires certain subjects at GCE or L3?

## Not sure yet?...

### Keep your options open

If you are not sure which course you wish to study at university, have you got a good balance to your options in terms of level and subjects (facilitating subjects are the subjects most likely to be required or preferred for entry to degree courses and therefore considering at least one maybe beneficial to applications)? A good starting point here would be to visit the website (<https://www.theuniguide.co.uk>) with such useful sections as:

1

## Find a degree course

Where you can browse subject guides for an introduction to a subject at degree level, including what you need to apply and potential career paths.

2

## Degree Subject Guides

Where you can explore study options.

3

## Explore University Profiles

To find out what life at university is really like

4

## Advice and Tips

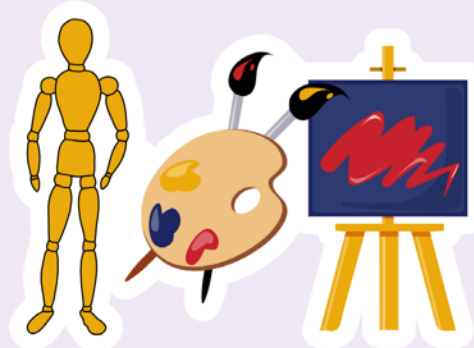
For further information and most frequently asked questions regarding UCAS.



# Art & Design

## Why should I choose this subject to study at Sixth Form?

Studying A level Art and Design will develop your creativity and is a key qualification for entry to a wide range of careers in the arts. You will learn to record from observation using drawing and photography, gathering visual information (including studying work by other artists, designers and craftspeople). You will experiment with a wide range of art media leading to more resolved final pieces.



You can expect to develop these skills in your own space (within the Vith Form Art Studio) and on trips to galleries in- London/Glasgow/Edinburgh/Liverpool/Manchester.

## What will I study?

### Year 12

A general Art & Design course covering Fine Art (Drawing, Painting and Printmaking), Graphic Communication (Art applied to Design Brief), Photography and Sculpture/3D Design

### Year 13

Students will be given the opportunity to specialise in one of the areas studied in Year 1 or to continue on a general Art & Design pathway

## How will I be assessed?

### Unit 1 – Portfolio (60% of total A Level marks)

A practical unit where a range of skills and techniques will be developed over the two years leading to an extended project on a set theme. Also includes a personal investigation based on a photographer/artist/art movement or genre of 1000-3000 words.

### Unit 2 – Externally Set Assignment (40% of total A Level marks)

A practical unit developing work on one of a choice of 8 themes culminating in a 15 hour final piece.

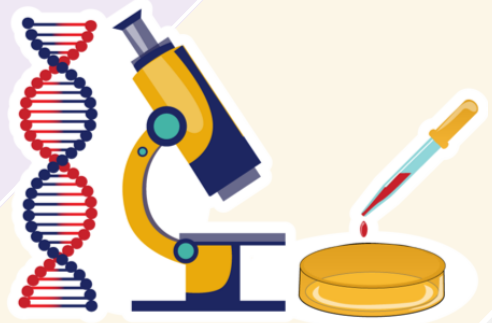
## Entry Requirements

A Grade 6+ at Art GCSE is usually essential to study this course.

# Biology

## Why should I choose this subject to study at Sixth Form?

Biology is the study of living organisms and the interactions between them. Living systems are complex, even more so than you might imagine! But in that complexity lies the beauty of life, and completing an A-level in Biology will change the way you see living organisms forever.



## What will I study?

**Biochemistry:** How do molecules react with each other to create the processes of life?

**Cell Biology:** There is a lot more going on inside a cell than you could possibly imagine! You will delve into this fascinating world of tiny machines.

**Genetics:** How does our amazing DNA encode the instructions for making us? And how are those instructions read?

**Organisms:** How do our bodies (and those of other plants and animals) work?

You will learn about several major organ systems and how they work.

**Ecosystems:** How are all living things on the planet connected? And how do we look after them?

## Where does Biology lead?

Biology is a stepping stone to a variety of careers, including: medicine, medical research, dentistry, veterinary science, forestry, agriculture and farming, environmental and conservation work, environmental health, brewing, the food industry, as well as teaching.

## Entry Requirements

There is a big jump in challenge from GCSE to A-level, so you need to be committed to working hard as well as having at least grade 7 in Biology or Combined Science. You should also consider taking 4 subjects initially in case the demands of the subject are too great.



# Business Studies

## Why should I choose this subject to study at Sixth Form?

Business is the heart of the economy, encouraging innovation and creating wealth.

The world of work is continually changing and employers are constantly requiring

employees who have appropriate skills to be able to contribute towards the success of their organisation. The course gives students core business skills which have a very practical use in the world of work.



We Offer:

**Single Business (equivalent to 1 A Level)** -OCR Level 3 Cambridge Technical Extended Certificate in Business

**Double Business (equivalent to 2 A Levels)** -OCR Level 3 Cambridge Technical Diploma in Business

## What will I study?

You will learn how a business might evolve. From a small start-up business to a large multinational organisation, you will consider a range of different business types and gain an understanding of how the choice of business type might affect the objectives that are set. You will also look at the internal workings of businesses, including their internal structure and how different functional areas work together. Plus, by looking at the external constraints under which a business must operate, you will gain an understanding of the legal, financial and ethical factors that have an impact.

The business world places a high value on the ability to research, analyse and evaluate information in order to make considered decisions and you will have the opportunity to gain these vital skills.

## How will I be assessed?

**50% examination 50% coursework**

There are examinations but it is also a **practical** course where you will be expected to participate in group work including running an event. Part of the assessment is based on how well you collaborate and lead others.

## Entry Requirements

You do not have to have studied Business before but need 5 GCSES grades 5-9 including Maths and English

# Chemistry

## Why should I choose this subject to study at Sixth Form?

Chemistry is the study of matter and the way it behaves. It is sometimes called the 'central' science because it provides a foundation for understanding so many other subjects.

For example, chemistry explains aspects of plant chemistry (botany), the formation of igneous rocks (geology), how atmospheric ozone is formed and how environmental pollutants are degraded (ecology), the properties of the soil on the moon

(cosmochemistry), how medications work

(pharmacology), and how to collect DNA evidence at a crime scene (forensics).



## What will I study?

**Physical chemistry** is the study of the laws governing matter. Some of these topics will be familiar to you from GCSE such as rates of reaction or exothermic/endothermic reactions. At A-level this part of Chemistry becomes very mathematical and so one of the requirements of the course is a grade 7 in GCSE maths. There is also common content with Physics A-level in this part of the course.

**Inorganic chemistry** is the study of the elements and the periodic table. You will learn more about the groups you know from GCSE and learn just how powerful the periodic table is when it comes to predicting the properties of a substance. This part of the course prepares students well for going on to study subjects such as geology and so geography A-level goes well with this part of the course.

**Organic chemistry** is the study of carbon containing compounds. A whole branch of chemistry looking at just one element you say? Carbon is a special element as you will learn, it is the basis for all life on earth, plastics and many of the fuels we use today. This part of chemistry goes very well with A-level Biology as there is common content to both qualifications.

## Entry Requirements

Grade 7 (preferably higher) in Chemistry or Combined Science along with grade 7 or higher in GCSE mathematics.

# Computer Science

## Why should I choose this subject to study at Sixth Form?

Some people just like computers and learning to programme! However, on a wider level the thinking skills developed in the programming part of the course are good indicators to future employers/admissions tutors that you have a logical mind and can cope well with abstract concepts.



## What will I study?

Programming, Data structures, Algorithms, Theory of computation, Data representation, Computer systems, Computer organisation and architecture. Consequences of uses of computer science. Communication and networking, Databases, Big Data, Functional programming, Problem solving, Practical project.

## How will I be assessed?

Paper 1: practical test at a computer  
Paper 2: theory exam  
20% coursework project

## Where can Computer Science lead?

A level Computer Science is a good 'taster' to see if you would like to take a full time course in a computer science related area. The career prospects for computer science graduates are good; at a recent university open day 95% was the figure quoted for graduates of the course entering related employment at graduate entry level.

## Entry Requirements

You do not need to have studied Computer Science before, but you would need a 6+ in GCSE maths.

# Design & Technology

## Why should I choose this subject to study at Sixth Form?

Design and Technology is a unique subject that provides a structured approach to 'learning through doing'. The course is the only one that offers a pathway for either 'Product Design' or 'Fashion & Textiles'.

## What will I study?

During the first year of the course you will learn & develop a variety of technical, designing & making skills, through short projects. Alongside these practical based projects, you will undertake theoretical learning of design & technology in the 21<sup>st</sup> century. During your second year you will undertake a design and make project based on a brief you will create as well as a 3-hour written examination paper.

## How will I be assessed?

The course is Edquas Design & Technology (product design or fashion & textiles pathway)

### ***Component 1 (50% of the qualification-Design & Technology in the 21<sup>st</sup> Century)***

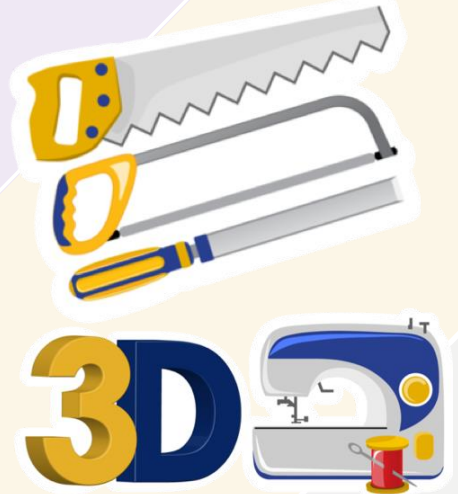
You will take a 3-hour written examination paper in either fashion and textiles or product design at the end of 2-year course. The exam will assess technical, designing & making principles, alongside your understanding of wider issues in design & technology, through a mix of structured and extended writing questions.

### ***Component 2 (50% of the qualification – Non-exam assessment-coursework)***

This component is a design and make project based on a brief you create. This project assesses your ability to identify, investigate and outline design possibilities, design and make prototypes, as well as being able to analyse and evaluate design decisions and outcomes including prototypes made by you and others (professionals/peers)

## Entry Requirements

We expect all of our incoming A Level student to have passed GCSE Design & Technology with at least a grade 5.



# Drama & Theatre Studies

## Why should I choose this subject to study at Sixth Form?

Drama and Theatre Studies are the study of drama, its performance and development through history. The focus of the course is on practical skills and their application to both text and improvised work.



Studying Edexcel drama you will learn how to work effectively as a group of actors, developing a piece of drama for an audience. It will also help you further develop your performance skills and ability to criticise the performance and design skills of professionals. Also, your ability to think creatively in a short space of time will be stretched. Project-based activities will show you how to develop an idea into a complete performance.

## What will I study?

**Component 1 Devising:** Presentation of a devised piece of drama.

**Component 2 Text in performance :** Presentation of extracts from a play a monologue or duologue.

**Component 3 Theatre Makers in practice :** Study of two plays and one theatre practitioner

## How will I be assessed?

**Component 1 Devising:** (40%) Performance and a written log of process.

**Component 2 Text in performance:** (20%) Performance of extracts.

**Component 3 Theatre Makers in practice :** (40%) 2hr 30min exam

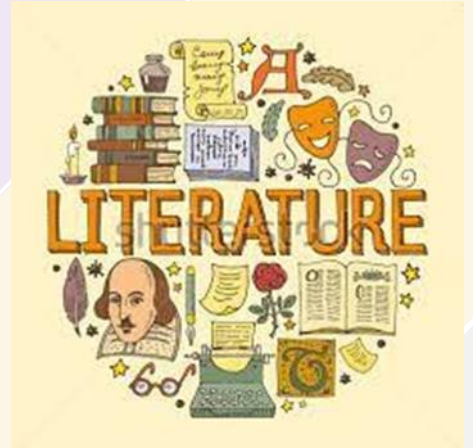
## Entry Requirements

Grade 5-9 in Drama or English

# English Literature

## Why should I choose this subject to study at Sixth Form?

If you enjoy reading and exploring writers' ideas and techniques, then this is the course for you. English Literature introduces you to great writers who open your mind to new ideas and ways of thinking. It gives you the chance to explore feelings, themes and context through the study of a wide range of literary texts: poems, plays and novels.



## What will I study?

### Component 1: Drama

In this unit, you will study a Shakespeare play and a modern drama with the focus on either tragedy or comedy. Texts may include Shakespeare's 'Othello' and Tennessee Williams' 'A Streetcar Named Desire'.

### Component 2: Prose

The texts you will read in this part of the course will share a theme, for example, 'Women and Society'. At least one text will be written before 1900.

### Component 3: Poetry

Students are required to study two selections of poetry; one specified post-2000 poetry text and either one specified selection of poems from one pre- or post-1900 text. This will be either a single named poet or a literary movement.

## How will I be assessed?

### All assessments carried out in year 13:

Drama – one exam: 2hr 15

Prose– one exam: 1hr 15

Poetry – one exam 2hr 15

Non-examination Assessment – one comparative essay of 2,500 – 3,000 words.

## Entry Requirements

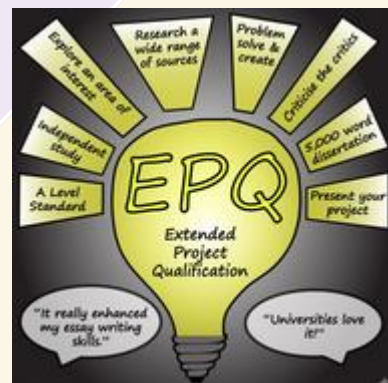
You need Grade 5 or above in GCSE English Language and/or English Literature.



# EPQ

## Why should I choose this subject to study at Sixth Form?

The EPQ (Extended Project Qualification), is highly recommended for students applying to university as it demonstrates your ability to write and reference academically and provides evidence that you have a real interest in your subject. It mirrors the independent style of learning required for success at degree level and in the workplace.



If you pursue your chosen project well, your EPQ can earn you up to **28 extra UCAS points** for an A\* which could just tip the scales in your favour when it comes to getting into the university of your choice!

## What will I study?

With the EPQ you are free to conduct your own in-depth research into an aspect of **any subject** (including those which may not be currently offered e.g. sociology, psychology, politics etc) under the supervision of a teacher. They'll be there to advise and guide you as you delve deeply into the subject.

## How will I be assessed?

There are three parts to the qualification:

- A log recording how you manage and research the project.
- A 5,000-word written report or essay or 1000 words plus an artefact.
- A presentation.

How does it work?

- You will be assigned a supervisor who will support and guide you through the process.
- You will have a series of taught lessons and will be expected to spend a further 90 hours working on the project independently.
- Projects are submitted in May. You may begin your project at any time but ideally, you should allow yourself at least six months to complete it.

## Entry Requirements

All students will be given the opportunity to complete an EPQ

# Film Studies

## Why should I choose this subject to study at Sixth Form?

Film is one of the main cultural innovations of the 20th century and a major art form of the last hundred years. Those who study it characteristically bring with them a high degree of enthusiasm and excitement for what is a powerful and culturally significant medium, inspiring a range of responses from the emotional to the reflective. Film Studies consequently makes an important contribution to the curriculum, offering the opportunity to investigate how film works both as a medium of representation and as an aesthetic medium.



## What will I study?

The WJEC Eduqas specification is designed to introduce A level learners to a wide variety of films in order to broaden their knowledge and understanding of film and the range of responses films can generate. This specification therefore offers opportunities to study mainstream American films from the past and the present as well as a range of recent and contemporary British films, American independent films and global films, both non-English language and English language. The historical range of film represented in those films is extended by the study of silent film and significant film movements so that learners can gain a sense of the development of film from its early years to its still emerging digital future. Studies in documentary, experimental and short films add to the breadth of the learning experience.

## Where can it lead?

It is an ideal base for degree courses in film, literature, publishing, journalism, website design, radio and television production, event management, advertising, marketing and film studies.

## Entry Requirements

You need Grade 5 or above in GCSE English Language and/or English Literature, and an interest in Film.

# Further Maths

## Why should I choose this subject to study at Sixth Form?

Further mathematics gives students a more complete understanding of how mathematics fits into the world around us. It looks in more depth at how pure mathematics is used to describe a wide range of subjects. The study of decision mathematics gives good insight into how complex networks function.



$$\sum_{n=1}^{\infty} a_n$$



## What will I study?

You will study four units Core Pure Mathematics 1 and Core Pure Mathematics 2 then any two from column A or a matching pair from column A and B

Column A	Column B
Further Pure Mathematics 1	Further Pure Mathematics 2
Statistics 1	Statistics 2
Mechanics 1	Mechanics 2
Decision 1	Decision 2

## How will I be assessed?

### AS Mathematics

**Core Pure Mathematics 1** and **Further Mathematics (Option 1 and 2)** make up the AS exam and consist of two 1 hour 40 minute examinations. All exams will be sat in the June of Year 12.

**This is an optional exam and will not be taken by all students.**

**A Level Mathematics Core Pure Mathematics 1, Core Pure Mathematics 2, Further Mathematics Option 1 and Further Mathematics Option 2** make up the A level Mathematics exam and consist of four 90 minute examinations. All exams will be sat in the June of Year 13.

If pupils complete the AS exams these marks will not go towards their A-level Maths exam.

## Entry Requirements

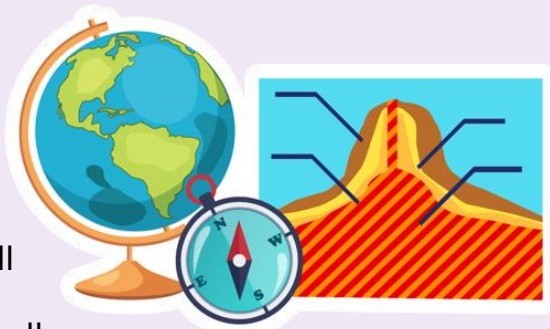
Five or more Grade 6 or above GCSE passes including at least a Grade 7 in mathematics.

# Geography

## Why should I choose this subject to study at Sixth Form?

Geography is becoming an increasingly relevant subject as pressing issues of resource management and climate change dominate the media. Geography students will look to investigate these issues in depth and consider possible solutions to these global challenges.

Students will begin the course by developing their understanding of global hazards, focusing on tectonic and hydro-meteorological events. They will consider the difficulties nations face in attempting to manage their increasingly vulnerable populations and reduce the economic burden of coping with disasters. We also tackle controversial issues such as fair trade, inequality in development and the growing concerns of a rapidly rising population. Geography equips students with a broader outlook on complex world issues. We aim to encourage pupils to develop their own opinions and raise awareness of sensitive issues such as inequality, conflict and development.



## What will I study?

<b>Year 12</b>	<b>Unit 1:</b>	Tectonics
	<b>Unit 2:</b>	Globalisation
	<b>Unit 3:</b>	Coastal Landscapes
	<b>Unit 4:</b>	Regeneration
<b>Year 13</b>	<b>Unit 5:</b>	Water Cycle
	<b>Unit 6:</b>	Carbon Cycle
	<b>Unit 7:</b>	Superpowers
	<b>Unit 8:</b>	Migration, Identity & Sovereignty

## How will I be assessed?

<b>Paper 1:</b>	2hrs 15	30%	Topics 1,3,5,6
<b>Paper 2:</b>	2hrs 15	30%	Topics 2,4,7,8
<b>Paper 3:</b>	2hrs 15	20%	Synoptic Decision Making Paper
<b>Independent Investigation</b>			Coursework element (20%)

## Entry Requirements

Grade 6+ in Geography GCSE

# History

## Why should I choose this subject to study at Sixth Form?

History is about people and people are complex, fascinating, frustrating and a whole lot of other things besides! This is why History is probably the most comprehensive and intriguing subject of all. It can be inspiring or alarming, heartening or disturbing, a story of progress and civilisation or of catastrophe and inhumanity. But History's importance goes well beyond the subject's intrinsic interest and appeal. Our beliefs and actions, our cultures, institutions and ways of living, our values and our means of making sense of ourselves are all shaped by the past. If we want to understand ourselves fully today, and to understand our possible futures, we have no choice but to study the past.



## What will I study?

### **UNIT 1: The Age of the Crusades, 1071-1204**

In this topic area, you would study the repeated attempts by Christian Europe to take back the Holy Land from Islamic hands. By investigating the causes and events and outcomes of the first four Crusades, and historians' interpretations of them, you would gain an uncommonly robust understanding of this seminal period in the history of Europe and the Middle East and a valuable perspective on global events today.

### **UNIT 2: The Wars of the Roses, 1450-99**

In this topic area, you would study the challenges faced by those in power during one of the most convulsive periods our nation has ever undergone. By investigating key players' motivations, actions and impact through first-hand contemporary accounts, you would gain an incredible insight into the social, political and religious forces at work as our country emerged painfully from the Medieval period and into the Early Modern era.

### **UNIT 3: Historical Investigation on a chosen pre-1485 topic**

For your coursework, which you would research, plan and write up independently over the two year course, you would be free to choose from a varied list of questions. All relate to the Ancient and Medieval periods only. Topics range from Alexander the Great, the triumph of Athens and the fall of the Roman Republic up to Alfred the Great, the Vikings, the Norman Conquest, King John and Henry V.

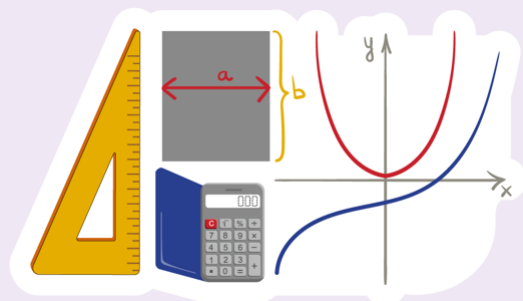
## Entry Requirements

Grade 6+ in History GCSE

# Maths

## Why should I choose this subject to study at Sixth Form?

Mathematics is the study of the underlying principles behind the practical sciences. Without the existence of mathematical principles both science and engineering would remain purely experimental. Mathematics provides a window onto the physical world and underpins a wide range of subjects.



## What will I study?

Pure Mathematics, Mechanics and Statistics.

## How will I be assessed?

### AS Mathematics

**Pure Mathematics (2 hours)** and **Mechanics and Statistics (1 hour 15 minutes)** make up the AS exam. All exams will be sat in the June of Year 12.

**This is an optional exam and will not be taken by all students.**

**A Level Mathematics Pure Mathematics Paper 1 (2 hours), Pure Mathematics Paper 2 (2 hours)** and **Mechanics and Statistics (2 hours)** make up the A level Mathematics course. All exams will be sat in the June of Year 13.

If pupils complete the AS exams these marks will not go towards their A-level Maths exam.

## Entry Requirements

Five or more Grade 6 or above GCSE passes including at least a Grade 7 in mathematics.



# Music

## Why study A Level Music?

This AQA course is an ideal continuation for students who have completed GCSE Music and/or students who have taken instrumental/singing grades and wish to include a Creative Arts option in their choices for Year 12-13. Music is a unique subject which brings together practical skills, creativity, analysis, emotional intelligence, use of technology/ICT, language and writing skills. A Level Music also makes links with wider learning in other subjects such as history, art, sociology, psychology and ICT/technology. Creative Arts subjects are appealing to many universities and employers as they can demonstrate a more rounded, multi-dimensional profile when combined with other subjects. All students choosing A Level Music must be committed to regular practice on an instrument/voice, open to exploring a wide range of musical styles through academic study, and interested in developing their own creative ideas. It is a challenging course.



## What will I study?

### *Component 1: Appraising Music (40% of total marks)*

In this component you will study a range of notated music, videos and recordings to build up your vocabulary and analytical skills, whilst also developing the listening and writing skills needed to complete the exam at the end of your AS/A2 year. All students will study the Western Classical Tradition, as well as choosing 1 (AS) or 2 (A2) other Areas of Study: Pop Music, Music for Media, Music for Theatre, Jazz, or Contemporary Traditional Music.

### *Component 2: Performance (30-35% of total marks)*

Towards the end of your AS/A2 year you will submit recordings of you performing as a soloist and/or as part of an ensemble. Any instrument/voice can be used. Suitable music should be chosen early on to allow you to reach the peak of your ability at the time of recording. Regular, focused practice is essential, and ideally you will have a 1-1 teacher available to help you with your specialist instrument/voice throughout the year. The final performance(s) must be a minimum of 6 minutes (AS) or 10 minutes (A2).

### *Component 3: Composing (25-30% of total marks)*

For both AS and A2 Level Music you will compose 2 pieces, to be submitted towards the end of the course. One is a free composition, in which you can explore your own ideas, interests and areas of strength to gain maximum marks. The other composition must be in response to a brief, e.g. writing for a specific film scene, using a given melodic idea, or using a given set of instruments. The total duration of the compositions should add up to at least 4m30s.

## Where can Music lead?

For students who wish to continue with music at University or as a career, A Level Music is a straightforward choice. There are a huge range of jobs available in the music industry today, besides the more obvious role of performing. Project managers, editors, promoters, engineers and technicians, social media and advertising teams, teachers, therapists, consultants, and much more, all depend on people with a musical background to contribute to the success of the industry, both in the UK and internationally. For students who may not be looking for a music-related career, A Level Music can be a useful way of demonstrating creativity, practical skills and a detailed understanding of international culture which may help you to stand out as a university or job candidate.

## Entry Requirements

A good result in GCSE Music is preferable. Continued practice and 1-1 lessons on an instrument/voice is essential.

# Physical Education

## Why should I choose this subject to study at Sixth Form?

Students receive a well-rounded and full introduction to the world of PE, sport and sports science. This complete grounding in the subject provides a fantastic base from which to build when they move on to higher education, employment or further training.



## What will I study?

- |  |   |
|--|---|
| Paper 1: Physiological factors affecting performance<br>Applied anatomy & physiology<br>Exercise physiology<br>Biomechanics        | (30% of total A Level)<br>90 marks / 2 hour paper |
| Paper 2: Psychological factors affecting performance<br>Skill acquisition<br>Sports psychology                                     | (20% of total A level)<br>60 marks / 1 hour paper |
| Paper 3: Socio-cultural issues in physical activity & sport<br>Sport & society<br>Contemporary issues in physical activity & sport | (20% of total A level)<br>60 marks / 1 hour paper |

COURSEWORK (or 'Non-exam assessment' / NEA) (30% of total A Level)

Part 1: Practical Performance in ONE activity only. (15%)  
(This can be either as a PERFORMER or as a COACH).

Part 2: 'The Evaluation & Analysis of Performance for Improvement'. (15%)

A verbal response to a 'live' performance, where students comment on strengths and weaknesses of the performance they see, then suggest a plan to improve the performance of the observed weaknesses.

## Entry Requirements

Although not essential, students will benefit from having studied Physical Education at GCSE level (minimum grade 5). Students must have attained at least grade 5 in English, Maths and Science.

# Physics

## Why should I choose this subject to study at Sixth Form?

Physics is a “facilitating subject”, meaning that it’s highly regarded whatever degree or career path you choose. It’s considered essential for science and engineering courses, so it keeps a lot of doors open for you. Physics opens these doors because of the skills and ways of thinking it teaches you. You’ll pick up mathematical and analytical techniques that are valued in a huge range of careers. You’ll become a critical and creative thinker, and a problem solver.



If you like asking big questions like what stars are made of, why do things move or how can we see thoughts then physics is for you. Physicists look for all the hidden laws that explain why all matter (that’s every physical thing) and energy in the known universe exists, where it comes from and how it behaves the way it does. Physicists use the laws they uncover to develop new materials, machinery, and technology to improve our lives and help us explore the universe further, from computers to telescopes and spacecraft.

## What will I study?

1. Particles and radiation
2. Waves
3. Mechanics and materials
4. Electricity
5. Further mechanics and thermal physics
6. Fields and their consequences
7. Nuclear physics
8. Optional topic – normally you will study Astrophysics

## Entry Requirements

Grade 7 or higher in Physics or Combined Science.

Physics is the most mathematical of all the science subjects and so you must be very comfortable with GCSE maths and have achieved at least a grade 7 in that subject as well. You should also consider taking 4 subjects initially in case the demands of the subject are too great.

We are committed to...

***INSPIRE***

***CHALLENGE***

***EMPOWER***

...our Sixth Form students



**The Lakes School**

Troutbeck Bridge, Windermere LA23 1HW

**Phone:** 015394 40810

**Web:** [www.thelakesschool.com](http://www.thelakesschool.com)



@thelakesschool

**#proudtobeTheLakesSchool**